



# The Bluebird

A Publication for the Alumni of Goessel High School

Volume 4 Number 2

Summer—2016



**90 Years Of Blue  
Goessel High School Alumni and Friends  
1926-2016  
October 7 and 8, 2016**

Schedule for Friday and Saturday

Friday: October 7

6:00: Pulled pork meal and concessions available before the game at the concession stand. The meal is a fundraiser for the alumni archive room. Feel free to bring lawn chairs and visit with fellow alumni.

7:00: Football game with the Ellinwood Eagles. After the game, weather permitting, Dan Bergen and the Night Flyers will provide an aerial show north of the football field.

Saturday: October 8

8:00-9:00 a.m.: Breakfast will be served by the Goessel Firemen at the Fire Station. This is a benefit for the Goessel Fire Department. You are encouraged to support these volunteers who provide a service to the community during a time of crisis.

9:00 a.m.: Golf tournament at Pine Edge Golf Course. Registration on page 2.

9:00-11:00 a.m./1:00-3:00: Junior High Gym will be open for impromptu class reunions.

9:00, 10:00, 2:00, 3:00: Tours of the high school. Meet at the Junior High entrance.

10:00-2:00: Scavenger Hunt around town. Get information at the high school cafeteria.

11:00-1:00: Chile Cook-off north of the Community Building.

Mennonite Heritage and Agricultural Museum, Brandy Iron Café, and Lincoln Perk open throughout the day.

5:00-6:45: Meal at the grade school. Preregistration required by September 16. Registration form on page 2 or online.

7:30—Program at the high school auditorium.

**An event schedule will be available at the high school cafeteria Saturday morning.**

## **Contact Information**

[abrahamsi@usd411.org](mailto:abrahamsi@usd411.org)

*Alumni Association*

*P.O. Box 68*

*Goessel, KS. 67053*

*Visit us on facebook:*

*goessel alumni*

*The alumni newsletter is also posted on the alumni page of the USD 411 webpage.*

# 90<sup>th</sup> Alumni Reunion Registration Form

Name: \_\_\_\_\_

Spouse/Guest: \_\_\_\_\_

Address: \_\_\_\_\_

City: \_\_\_\_\_ State: \_\_\_\_\_ Zip: \_\_\_\_\_

Email: \_\_\_\_\_ Year/years graduated: \_\_\_\_\_

Please put the number of participants by each activity you expect to attend.

\_\_\_ Friday evening: Tailgate meal served as a fundraiser for the alumni archive room

\_\_\_ Friday evening: Help serve concessions and tailgate meal

\_\_\_ Saturday morning: Firemen’s breakfast

\_\_\_ Saturday morning: Scavenger Hunt

\_\_\_ Saturday: Tour of the high school

\_\_\_ Saturday Lunch: Community Foundation Chili cook-off

\_\_\_ Saturday: Community Foundation Golf Tournament at Pine Edge Golf Course

\_\_\_ Saturday evening: Participate in an alumni choir and brass selection

\_\_\_ Saturday evening: Attend program

\_\_\_ Saturday evening: Meal – Registration and payment for the meal are required and will be accepted until September 16. We encourage registration and payment on-line using the link, [Registration Form](#). Or you may also send a check with the registration form to P.O Box 68, Goessel, Kansas 67053, attention Alumni Association. Checks can be made to Goessel Alumni Association.

Adults -- \$15.00

Children ages 5 – 10 -- \$7.00

Children under 5 are free

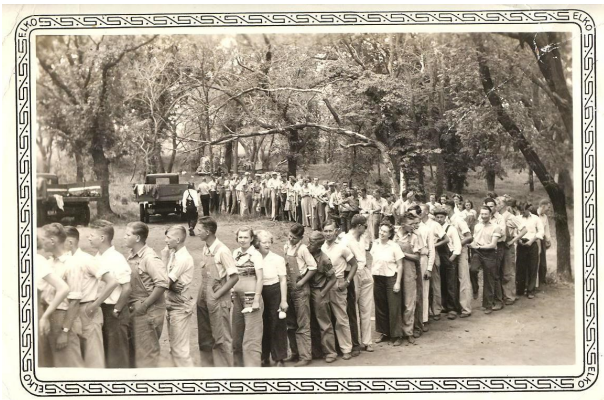
Total Amount Due for Meal: \_\_\_\_\_

SAVE THE DATE



**BENEFIT GOLF  
TOURNAMENT  
OCTOBER 8, 2016**

- ♦ 18-Hole, two person scramble
- ♦ Shotgun start at 9:00 A.M.
- ♦ Cost is \$40 per person (meal and 3 mulligans included)
- ♦ Fund-raiser for Goessel Community Foundation Impact Fund
- ♦ Prizes will be awarded
- ♦ To register your team, call 620-747-0707 or email: [luvnmilk@mtelco.net](mailto:luvnmilk@mtelco.net)
- ♦ Registration deadline—Friday, October 7



**Long lines, great food, and good conversation.**

**Join us and make it happen!**

## Chili Cook-off Rules

- Entrants must be 18 years of age or older. Persons DO NOT have to be alumni of Goessel School system to enter.
- Beef, pork, buffalo, or chicken used in chili must be USDA-approved (grocery store or locker plant). Meatless chili is also allowed, chili may be made with or without beans. Sorry, no wild game allowed (possum, coon, squirrel, armadillo, etc.)
- Entrants are encouraged to cook chili on-site, personnel will be at cook-off site by 7:30 a.m. the day of contest. LP gas and charcoal are preferred methods of cooking-limited electricity is available, so don't plan on it unless you ask for it in advance.
- Entrants must use proper hygiene and food-handling practices. Each booth must have hand washing station (plastic gloves are encouraged) and must have food thermometer to check for proper soup temperature. Chili must be brought to 165 degrees as soon as possible, then kept at a temperature above 140 degrees while serving. Chef will be making random checks of soups to ensure proper temp's.
- Bathrooms and water will be available nearby.
- Entrants are allowed/encouraged to "dress up/spruce up" their contest booth space.
- No spices are "outlawed", however keep in mind this is a "family event" and try to not "over-spice" your chili and make it too hot for the average person.
- Entrants are encouraged to make at least 3-5 gallons of chili for the public to taste/judge (if you run out, it's only to your disadvantage). Entrants are allowed to make large amounts if desired and may sell bowls of their chili to the public if desired (must bring own bowls, spoons, cashbox, etc.)
- Entry fee for chili cook-off is \$15 per booth/chili. Teams are welcome. Tasting time will be 11:00 a.m. to 1:30 p.m. Awards will be presented for 1<sup>st</sup>, 2<sup>nd</sup>, and 3<sup>rd</sup> place-public judging.

Any questions, please call **Bruce Funk @ 316.734.2861** Show off your award-winning chili recipe and have a good time doing it!

### Wear your pride! - Celebrate with a GHS shirt! - Go Big Blue!

Mark Quantity for each size:

Short Sleeve T-Shirt \$14 each.

S	M	L	XL	2XL	3XL	4XL	5XL	Sub-Total

Adult Long Sleeve T-Shirt \$18 each

S	M	L	XL	2XL	3XL	4XL	5XL	Sub-Total

Youth Short Sleeve T-Shirt \$14 each.

XS	YS	YM	YL	Sub-Total

--

Total Includes Sales Tax:

Please make checks payable to "**Sunflower Promo**"

Please send form with check to: **Sunflower Promo, PO Box 72, 209 E. Main Street, Goessel, KS 67053**

**Order deadline by mail is Sept. 9. Questions: [james@SunflowerPromo.com](mailto:james@SunflowerPromo.com) - PH: 620-367-8100**

**For more information or to order online go to: [www.SunflowerPromo.com](http://www.SunflowerPromo.com) & click 90 years of Blue.**

**Pick up your shirts @:** - Football stadium October 7 from 6-8pm.  
 - High School Cafeteria on October 8 from 8-10am or from 5-7 pm at the grade school.

Name(s): \_\_\_\_\_

Phone: \_\_\_\_\_

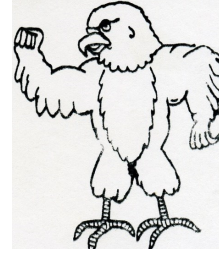
Email: \_\_\_\_\_



A Publication from the  
Alumni Association

Ilona Abrahams,  
Editor

Evan Hiebert, class of 2010, designed the t-shirts. The t-shirt was designed using the four mascots that have been used the most throughout the last ninety years. The flying bluebird was first used on the cover of the 1929 yearbook. The sitting bluebird has been found on sport shirts as well as on the band banner. It may have been used as early as 1950. The fighting bluebird made it's first appearance in the center of the gym floor in 1970. It was painted over in 1996 to accommodate volleyball rules. The fighting bluebird was presented in a number of different ways. The newest mascot was designed in 2010. Pictured below are some additional depictions of the bluebird. More information about the selection of a mascot will be presented at the program on Saturday evening.



Alumni Association  
P.O. Box 68  
Goessel, KS 67053

NON-PROFIT ORGANIZATION  
US POSTAGE PAID  
PERMIT #8  
GOESSEL, KS 67053